

**PRSNELL ASSOCIATES INC**

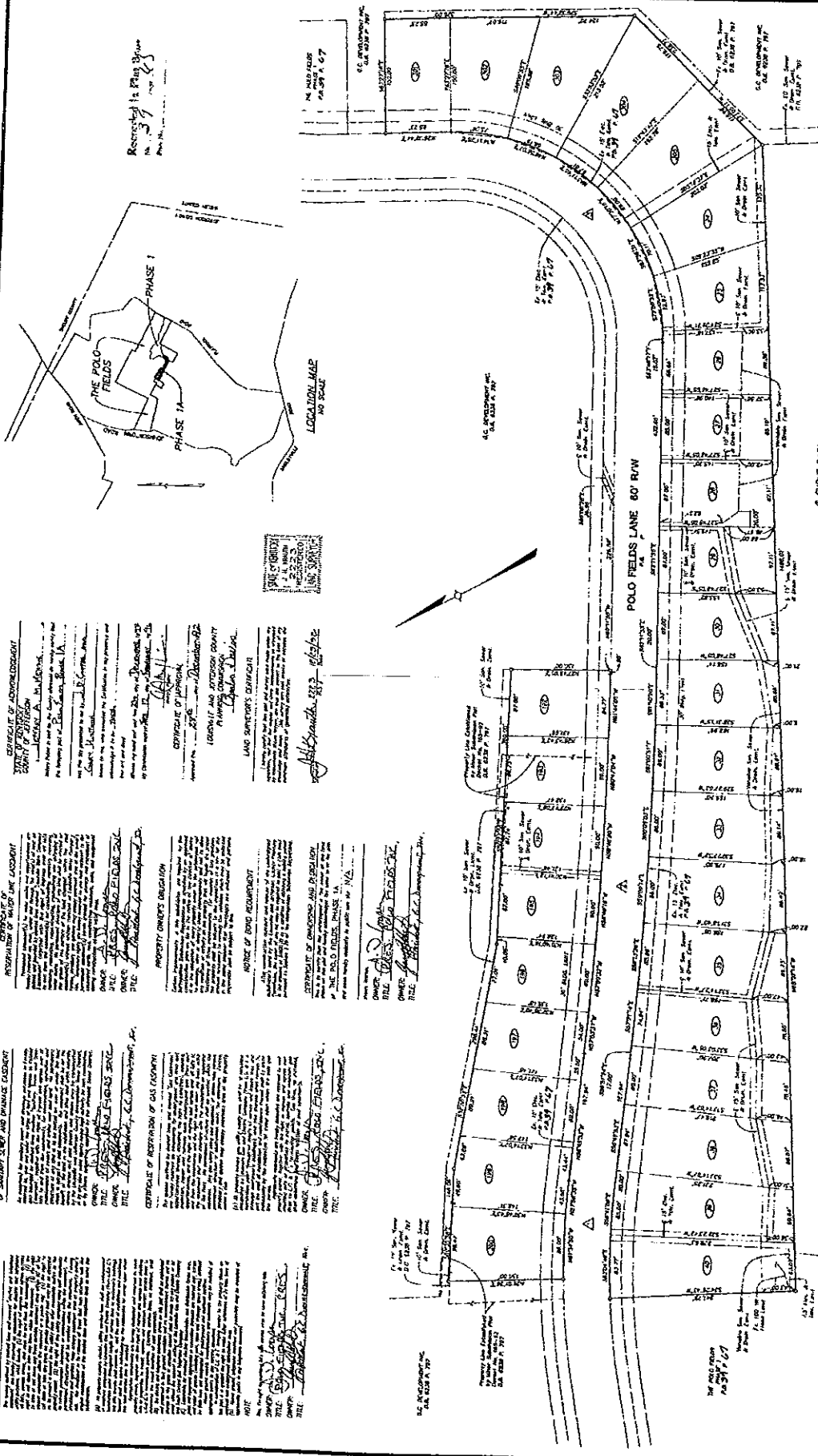
Professional Engineers  
 217 West 2nd Street, Louisville, Kentucky 40202  
 Phone: (502) 582-1111  
 Fax: (502) 582-1112

**THE POLO FIELDS, PHASE 1A**  
 POLO FIELDS, INC.  
 2309 WATKINSON TRAIL  
 LOUISVILLE, KENTUCKY 40228

Project Name: THE POLO FIELDS, PHASE 1A  
 Date: DECEMBER 23, 1997  
 Job No.: 971180

1

BK 39 X 1765



**STATEMENT OF ACKNOWLEDGMENT**  
 COUNTY OF JOHNSON  
 I, J. L. WILSON, County Clerk, do hereby certify that the foregoing plat of subdivision of land is a true and correct copy of the original as filed in my office on this 23rd day of December, 1997.

**STATEMENT OF PROPERTY**  
 COUNTY OF JOHNSON  
 I, J. L. WILSON, County Clerk, do hereby certify that the foregoing plat of subdivision of land is a true and correct copy of the original as filed in my office on this 23rd day of December, 1997.

**STATEMENT OF OWNERSHIP**  
 COUNTY OF JOHNSON  
 I, J. L. WILSON, County Clerk, do hereby certify that the foregoing plat of subdivision of land is a true and correct copy of the original as filed in my office on this 23rd day of December, 1997.

**STATEMENT OF RESERVATION OF RIGHTS**  
 COUNTY OF JOHNSON  
 I, J. L. WILSON, County Clerk, do hereby certify that the foregoing plat of subdivision of land is a true and correct copy of the original as filed in my office on this 23rd day of December, 1997.

**STATEMENT OF RESERVATION OF RIGHTS**  
 COUNTY OF JOHNSON  
 I, J. L. WILSON, County Clerk, do hereby certify that the foregoing plat of subdivision of land is a true and correct copy of the original as filed in my office on this 23rd day of December, 1997.

**STATEMENT OF RESERVATION OF RIGHTS**  
 COUNTY OF JOHNSON  
 I, J. L. WILSON, County Clerk, do hereby certify that the foregoing plat of subdivision of land is a true and correct copy of the original as filed in my office on this 23rd day of December, 1997.

**STATEMENT OF RESERVATION OF RIGHTS**  
 COUNTY OF JOHNSON  
 I, J. L. WILSON, County Clerk, do hereby certify that the foregoing plat of subdivision of land is a true and correct copy of the original as filed in my office on this 23rd day of December, 1997.

**STATEMENT OF RESERVATION OF RIGHTS**  
 COUNTY OF JOHNSON  
 I, J. L. WILSON, County Clerk, do hereby certify that the foregoing plat of subdivision of land is a true and correct copy of the original as filed in my office on this 23rd day of December, 1997.

**STATEMENT OF RESERVATION OF RIGHTS**  
 COUNTY OF JOHNSON  
 I, J. L. WILSON, County Clerk, do hereby certify that the foregoing plat of subdivision of land is a true and correct copy of the original as filed in my office on this 23rd day of December, 1997.

**NOTES**  
 1. All dimensions are in feet and inches.  
 2. All bearings are in degrees, minutes and seconds.  
 3. All distances are in feet and inches.  
 4. All lot areas are in acres and square feet.  
 5. All bearings are in degrees, minutes and seconds.  
 6. All distances are in feet and inches.  
 7. All lot areas are in acres and square feet.

**CURVE DATA**  
 1. RADIUS = 111.11'  
 2. CHORD BEARING = 112.50°  
 3. CHORD DISTANCE = 111.11'

**SCALE**  
 1" = 40'

**DATE**  
 DECEMBER 23, 1997

19971180  
 BK 39 X 1765